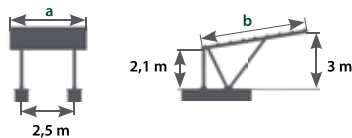
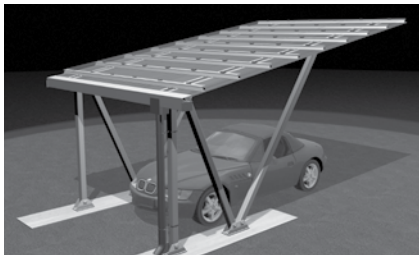


Private Park@Sol – Checklist EN

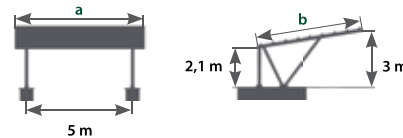
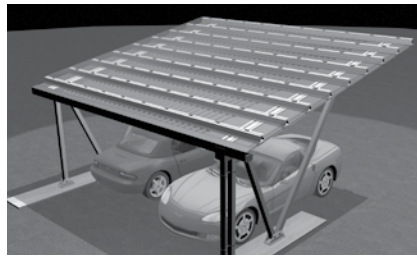
Standardized carport kits for private users or smaller company parking lots

- Ideal unit assembly system including mounting instructions
- Can be delivered at short notice
- Generally licence-free for up to 2 parking spaces
- Applicable for most standard module sizes
- Drawings, reinforcement plan and LGA structural standards included
- Roof inclination 10 degrees - optimized for custom arrangements
- 10 year durability warranty, details and conditions can be referenced at www.schletter.eu
- Unpack it - mount it - that's it!

Mono Carports



Duo Carports



Foundations to be provided by the customer in accordance with the design structural analysis.



Optional eaves guttering designs with left downspout (DL) and right downspout (DR).

Mono carports for approx 1.5 - 2.5 kWp (1 parking space)

Item no.	Compatible modules	Measurement a	Measurement b	Module arrangement	List price per kit
175000-001	24 pcs. 1200 x 600 mm	3.61 m	5.26 m	8H3	€ 2,759.09
175000-003	12 pcs. 1300 x 1100 mm	3.44 m	5.40 m	4V3	€ 2,661.44
175000-005	10 pcs. 1318 x 990 mm	2.72 m	5.35 m	5H2	€ 2,175.02
175000-007	12 pcs. 1600 x 800 mm	3.37 m	4.96 m	3V4	€ 2,417.51
175000-009	9 pcs. 1650 x 990 mm	3.10 m	5.11 m	3V3	€ 2,428.60
175000-011	9 pcs. 1700 x 1000 mm	3.13 m	5.26 m	3V3	€ 2,387.86

Eaves gutter

Item no.	Item no.	List price
AL	AR	
175001-018	175001-017	€ 311.55
175001-016	175001-015	€ 305.60
175001-014	175001-013	€ 279.70
175001-012	175001-011	€ 302.83
175001-020	175001-019	€ 295.32
175001-022	175001-021	€ 296.51

Duo car ports for approx. 3 - 5 kWp (2 parking spaces)

Item no.	Compatible modules	Measurement a	Measurement b	Module arrangement	List price per kit
175000-002	40 pcs. 1200 x 600 mm	6.02 m	5.32 m	8H5	€ 4,760.04
175000-004	20 pcs. 1300 x 1100 mm	5.69 m	5.40 m	4V5	€ 4,521.07
175000-006	20 pcs. 1318 x 990 mm	5.22 m	5.44 m	4V5	€ 4,276.36
175000-008	24 pcs. 1600 x 800 mm	6.65 m	4.96 m	3V8	€ 4,475.59
175000-010	15 pcs. 1650 x 990 mm	5.22 m	5.11 m	3V5	€ 3,855.49
175000-012	15 pcs. 1700 x 1000 mm	5.27 m	5.26 m	3V5	€ 3,816.07

Eaves gutter

Item number	Item no.	List price
AL	AR	
175001-024	175001-023	€ 381.58
175001-006	175001-005	€ 378.50
175001-002	175001-001	€ 362.03
175001-026	175001-025	€ 462.62
175001-002	175001-001	€ 362.03
175001-002	175001-001	€ 362.03

The module measurements outlined above are for guidance only as representative example designs. We would be happy to assist you with custom dimensions. The specification next to the respective module measurements describes the module arrangement.

Example: 8H3 → 8 rows, horizontal modules, 3 modules per row

Example: 4V5 → 4 rows, vertical modules, 5 modules per row

Net prices apply for each complete unit assembly system; discounts are granted in accordance with our solar customer discount scheme; volume discounts are possible; All prices subject to change. Prices ex works Kirchdorf/Haag in Upper Bavaria plus VAT.

Private Park@Sol – Checklist EN

Standardized carport kits for private users or smaller company parking lots

Scope of delivery

The Schletter system carports Private Park@Sol are delivered as complete kits ready for installation.

- All components and connectors (incl. module clamps)
- Base clamps with rubber molded parts for positioning on concrete foundations
- Packing list with mounting instructions
- Design structural analysis including dimensioning specifications for the foundations
- Soffit-Panelling

To be carried out / provided by the customer

- Foundation construction
- Mounting
- Modules, cabling, inverters, grid connection
- Anchor for base clamps (for example Fischer Highbond FHB II-A L or products of equivalent quality) - can be ordered as option

Optional accessories

- Screw anchors for fastening to concrete foundations
- Inverter brackets
- Eaves guttering / downspout compl.

Please note: Depending on the design, the risk of snow masses sliding from the roof must be considered at the planning phase. Accessory components for minimizing impact of snow slide are available on request, however, depending on the module alignment, the possibility of module shading must also be considered when planning the installation of these.

Foundation designs - Please note!

In accordance with specifications outlined in the Code of Practice for scope of delivery, foundations for the Schletter system Carports can be built or customized to the required loads by the customer. Foundation loads according to the LGA structural type analysis can be found in the supplied documentation along with the foundation recommendation.

Foundation - standard dimensions

Mono (L x B x H) = 290 x 60 x 90 cm

Duo (L x B x H) = 380 x 60 x 90 cm

Foundations can be constructed to two different designs.



Mounting on a foundation provided by the customer with impact protection

With this design, the foundation is constructed with a pedestal of height min. 50 cm. The specification "Vehicle impact protection" is hereby achieved. This carport is slightly taller in design and is therefore also suitable for delivery vehicles, etc.



Mounting on a foundation provided by the customer with no impact protection

This variant is suitable for private parking lots or on-site company parking lots with no public access. Please note, however, that impact protection may be required in certain circumstances, particularly where the carport is used by the general public.

Certificate LGA-design structural analysis

Structural dimensioning is based on the regulations of the DIN 1055 Section 4, wind loads and DIN 1055 Section 5, snow loads. Maximum snow load $s_i = 1,60 \text{ kN/m}^2$. The following snow load zones are covered:

- Snow load zones I + II up to a height of 588m above sea-level.
- Snow load zone IIa up to a height of 500m above sea-level.
- Snow load zone III up to a height of 439m above sea-level.

Similarly the "North German Plain" must be taken into account as a special case. With regard to wind loads, the wind zones 1 and 2 must be taken into account. In coastal areas located in wind zones 3 and 4, a separate structural analysis is required. In borderline cases, please contact the technical advice department at Schletter. Please note that the structural analysis only covers the carport structure and does not include modules mounted by the customer.

Private Park@Sol – Checklist EN

We thank you for your interest in our systems. Please enter all the information requested below to allow us to create an offer to fit your precise requirements. Please note: fields marked with → must be filled in!

Company data → _____ Customer number → _____ Company name If you are a new customer, please enter your company and contact data _____ Company _____ Street _____ Postal code Town / City _____ Country _____ VAT ID no.	Contact person _____ First name _____ Last name _____ Telephone _____ Mobile _____ Fax _____ E-mail
---------------------------------------------------------------------------------------------------------------------------------------------------------------------------------------------------------------------------------------------------------------------------------------------	------------------------------------------------------------------------------------------------------------------------------------------------

Private Park@Sol variant: <input type="checkbox"/> Mono carport (one parking space) <input type="checkbox"/> Duo carport (two parking spaces) Reinforcement plan <input type="checkbox"/> with impact protection <input type="checkbox"/> with no impact protection	Module dimensions: <input type="checkbox"/> 1200 x 600 mm <input type="checkbox"/> 1300 x 1100 mm <input type="checkbox"/> 1318 x 990 mm <input type="checkbox"/> 1600 x 800 mm <input type="checkbox"/> 1650 x 990 mm <input type="checkbox"/> 1700 x 1000 mm _____ Module thickness / frame height (mm) _____ No. carports (units)	Auxiliary equipment / accessories <input type="checkbox"/> Eaves / downspout compl. <input type="checkbox"/> Downspout left <input type="checkbox"/> Downspout right <input type="checkbox"/> Bracket for inverter List price inverter Item no. 175002-001 Mono € 103.75 Item no. 175002-002 Duo € 103.75
------------------------------------------------------------------------------------------------------------------------------------------------------------------------------------------------------------------------------------------------------------------------------------------------------	---------------------------------------------------------------------------------------------------------------------------------------------------------------------------------------------------------------------------------------------------------------------------------------------------------------------------------------------------------------------------	-----------------------------------------------------------------------------------------------------------------------------------------------------------------------------------------------------------------------------------------------------------------------------------------------------------------------------------------------------

To allow for quick and easy processing, the most important of our standard designs are supplied as complete kits, at a fixed price (see page 1). If your order includes optional accessory components, we recommend the use of our Private Park@Sol Configurator which can be found under the menu item *Download > Solar mounting > Software & calculation** on our homepage: www.schletter.eu

* User account required

Thank you for taking the time to provide us with all required information.

Once we have received your completed checklist we will draw up your calculation as quickly as possible.

Fax the checklist to: +49 8072 9191-9200 or email it to us at: anfrage@schletter.de

Do you need further information? www.schletter.eu